

www.sitecna.eu

## AISI316L 3/4", 1"NPT pilot actuated poppet valves - EP serie

Valvole pneumatiche ad otturatore in AISI316L 3/4", 1"NPT - serie EP

- Suitable for automation equipment to onshore, offshore, pharmaceutical, medical and food applications
- Full material traceability
- 3/2 universal function
- 1/2" (DN 12) 3/4" (DN16mm) & 1" (DN21mm) size
- Suitable for multidirectional flow
- Provided with through-holes in the body
- Suitable for control and instrument gases
- ATEX 2014/34/UE II 2G Ex h IIC T6/T5 Gb X  
II 2D Ex h IIIC T85°C/T100°C Db X
- & approved
- SIL 3 - IEC 61508



- Adatto per automazione in applicazioni marine, petrolchimiche, farmaceutiche, medicali e alimentari
- Completa rintracciabilità dei materiali
- Funzione 3/2 universale
- Taglie da 3/4" (DN 16mm) e 1" (DN21mm)
- Dotate di fori passanti sul corpo

- Idonee per gas di controllo e strumentale
- ATEX 2014/34/UE II 2G Ex h IIC T6/T5 Gb X  
II 2D Ex h IIIC T85°C/T100°C Db X
- Approvato ed
- SIL 3 - IEC61508

<b>Media / Fluido</b>	<b>Compressed air, inert gases, sweet and sour gases</b>
<b>Line port / Connessioni</b>	<b>1/2", 3/4", 1"NPT</b>
<b>Pilot port / Connessioni</b>	<b>1/8"NPT</b>
<b>Working Pressure</b> Pressione di lavoro	<b>10 bar</b>
<b>Minimum pilot pressure</b> Pressione minima di pilotaggio	<b>1.5bar</b>
<b>Working temperature /</b> Temperatura di esercizio	<b>-20°C up to 80°C (NBR); -25°C up to 90°C (FKM); -60°C + 90°C (HNBR)</b>
<b>Orefice/Orifizio</b>	<b>dn 12 (1/2") dn 16 mm (3/4") dn 21 mm (1")</b>
<b>CV</b>	<b>4.1 (1/2"), 9.3 (3/4"), 12.1 (1")</b>

Air supply must be dry enough to avoid ice formation at temperatures below +2°C (+35°F).

BUILDING MATERIALS	Materiali costruttivi
<b>Body, end adapters, spool in 316L stainless steel</b>	Corpo, adattatori terminali e spola in acciaio inossidabile AISI316L
<b>Screws and springs in stainless steel</b>	Viti e molle in acciaio inossidabile
<b>Gasket &amp; seals in elastomer</b>	Guarnizioni e tenute in elastomero

\* pending for 1/2" & 3/4" (DN16) poppet

BT-EP16SS/C24A

## Overall dimension & pneumatic diaphragm

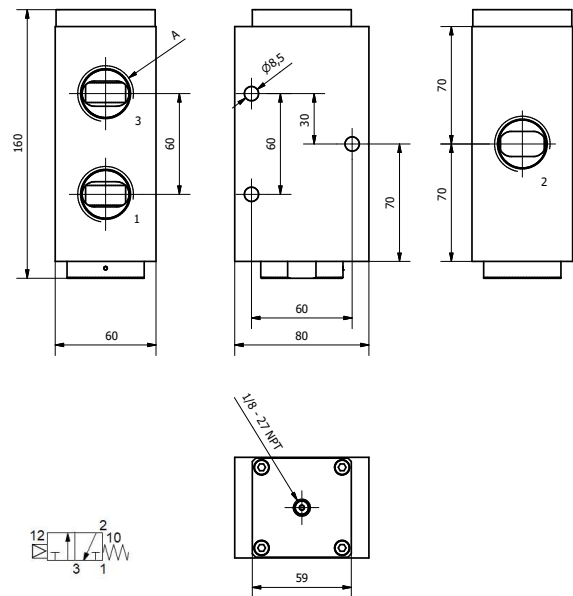
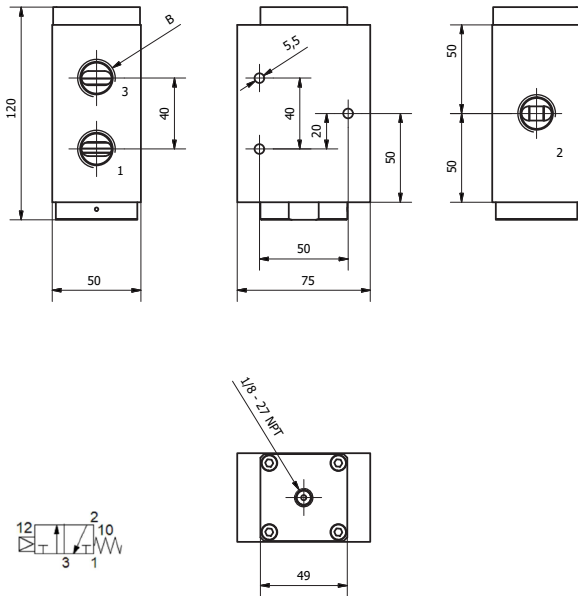
Dimensioni di ingombro e schema pneumatico

### Operator: Air pilot / Return: Spring

Azionamento: Pneumatico / Ritorno: molla

1/2"

3/4", 1"



### Example code:

A=1/2" : EP32SS08NNB

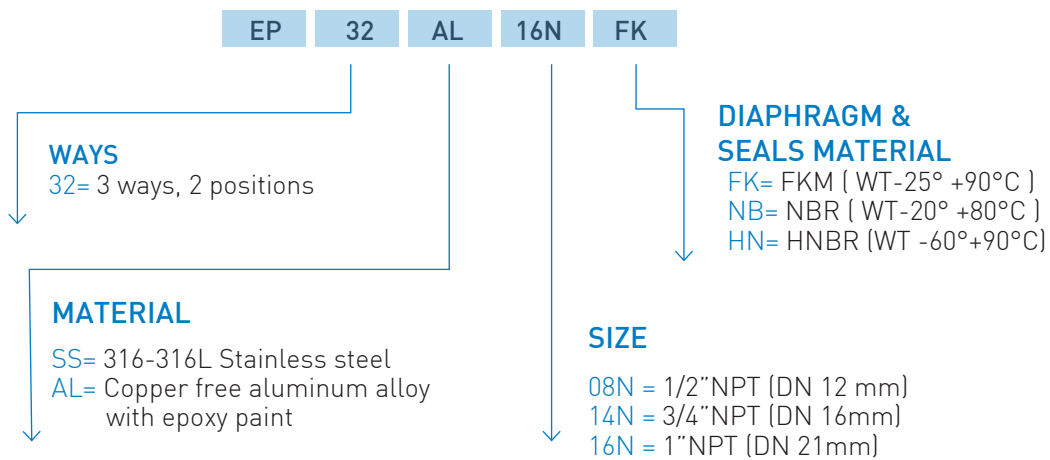
### Example code:

A= 3/4":DN16 EP32SS14NNB

A= 1" : EP32SS16NNB

## Ordering information

Come ordinare



BT-EP16SS/C24B